

QUAD SERIES MELT BLOWN FILTERS

100% MADE IN THE USA

QUAD-PRO

- FDA 21 Compliant
- Great Value
- No Glue or Binders
- High Dirt Loading
- Low Pressure Drop

QUAD-DELUXE

- 95% Efficiency at designated microns
- FDA 21 Compliant
- Integrated 4 Stage Depth Loading
- High Dirt Loading
- Low Pressure Drop

QUAD-ELITE

- 99% Efficiency at designated microns
- FDA 21 Compliant
- Integrated 4 Stage Depth Loading
- Cored Center for Filter Stability
- High Dirt Loading
- Heat set surface to stop fiber migration

QUAD-RO

- High-End Membrane Protection when it is Critical
- FDA Compliant
- Integrated 4 Stage Depth Loading
- Cored Center for Filter Stability
- High Dirt Loading
- Heat set surface to stop fiber migration
- Designed to protect membranes for SDI reduction

*"BE" Melt Blown Cartridges are WQA tested and certified to:
NSF/ANSI 372 / NSF/ANSI 61 / CSA B483.1 / NSF/ANSI 42 - Component*



The 4-zone technology allows the larger particles to be trapped on the outer most layers. The inner most layer is where the true efficiency rating is achieved. The two images show how there is a consistent dirt loading pattern throughout the life of the filter.



Zone 1
Filter Media

Zone 2
Prefilter

Zone 3
Dirt Loading

Zone 4
Dirt Loading

This image shows the Quad Series cut away layer by layer. The outermost layers are made of larger diameter fibers to allow larger particles to flow through, while the inner most layers trap the fine particles maximizing the life of the filter.

The Quad Series is offered with or without a heavy duty polypropylene core.



ADVANTAGES

- Removal from 1u to 100um
- Quad Zone technology allow the formation of 4 separate filtration zones within the depth of the filter cartridge.
- Continuous 4 zone structure provides effective pre-filtration and final filtration.
- State of the art computer controlled manufacturing process delivers an extremely accurate and consistent product per each zone for proper fiber sizing.
- High-strength polypropylene core maximizes flow and optimizes each of the 4 zones. All 4 series may be cored, if required.
- 100% polypropylene construction allows a wide range of uses, including FDA compliant material for food and beverage contact under CFR Title 21.
- All Quad Series cartridges are free of surfactants, binders or adhesives of any kind.
- Continuous lengths up to 72".
- All End Configurations available to fit most industry standards.
- All end caps are thermal bonded, no glues or adhesives are used.

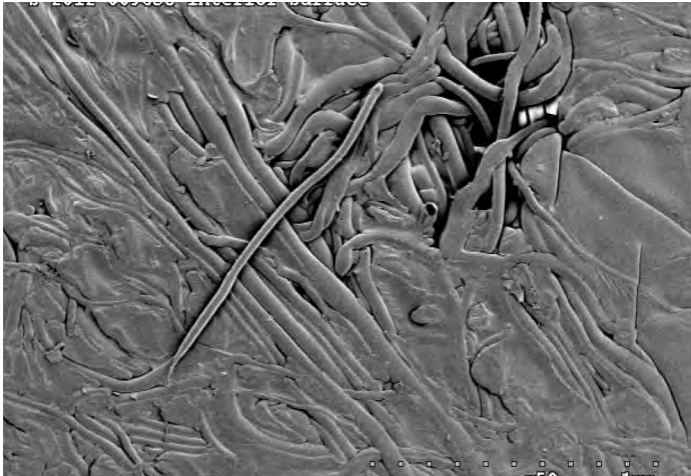


Image A: Competitor Surface

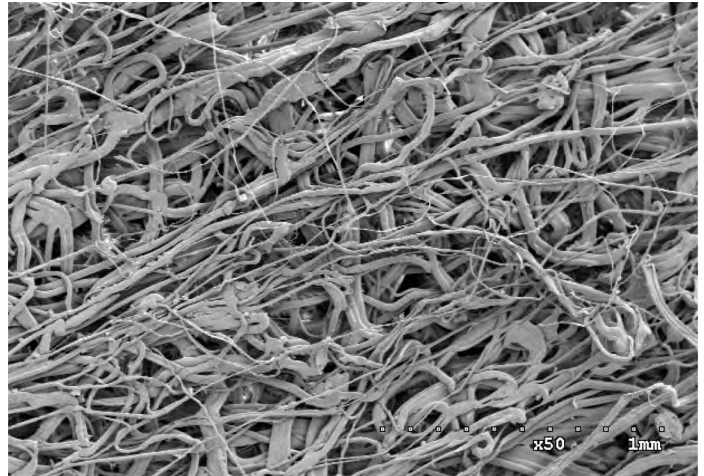


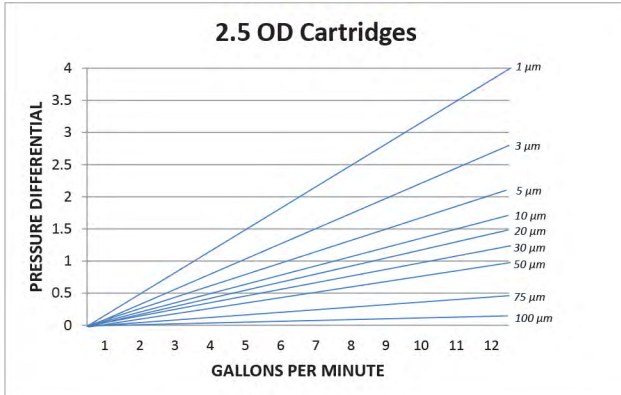
Image B: Our Surface

Image A is a microscopic photo of the outer surface of a typical melt blown filter. Most competitors blind off the surface of the filter to create smaller openings to achieve higher efficiencies. The ability to control the inner layer's efficiency separately, allows the *Quad BE Series* to have a more open outer surface as in Image B. Not having to sacrifice dirt holding capacity to achieve high efficiency is why the *Quad BE Series* is superior to other melt blown filters.

FLOW RATES VS DIFFERENTIAL PRESSURE

QUAD RO

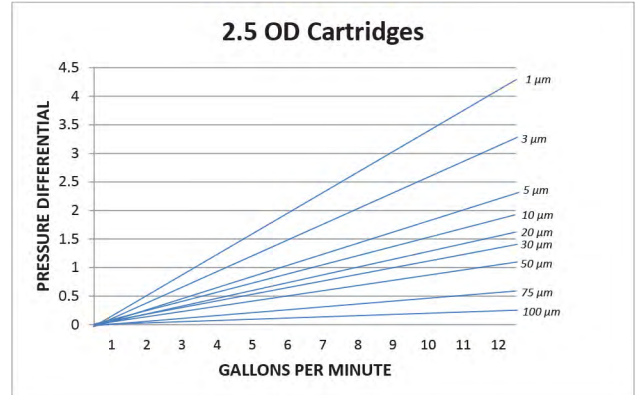
2.5 OD Cartridges



This chart exemplifies normal flow rate for a cartridge length of 10" with water at an ambient temperature as the test fluid. Cartridge length does not cause change in differential pressure, but increasing flow across the housing does.

QUAD ELITE

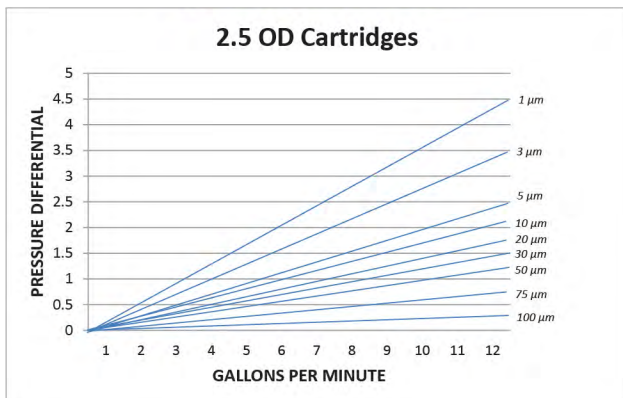
2.5 OD Cartridges



This chart exemplifies normal flow rate for a cartridge length of 10" with water at an ambient temperature as the test fluid. Cartridge length does not cause change in differential pressure, but increasing flow across the housing does.

QUAD DELUXE

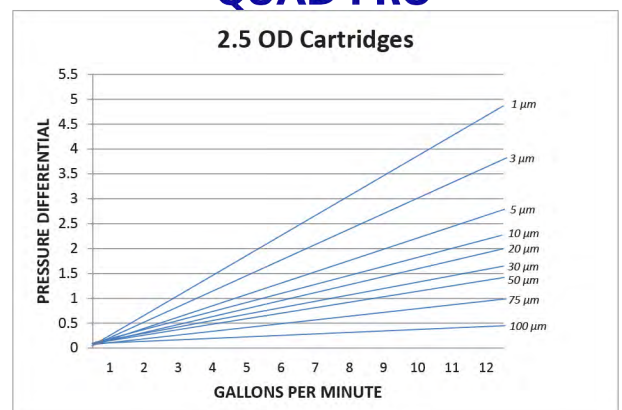
2.5 OD Cartridges



This chart exemplifies normal flow rate for a cartridge length of 10" with water at an ambient temperature as the test fluid. Cartridge length does not cause change in differential pressure, but increasing flow across the housing does.

QUAD PRO

2.5 OD Cartridges



This chart exemplifies normal flow rate for a cartridge length of 10" with water at an ambient temperature as the test fluid. Cartridge length does not cause change in differential pressure, but increasing flow across the housing does.

SPECIFICATIONS

- Maximum Forward Differential Pressure
40 psid (1.7 bar) @ 150° F (66° C)
60 psid (3.4 bar) @ 86° F (30° C)
- Recommended Change Out Differential Pressure
35 psid (2.4 bar)
- Micron Ratings
1, 5, 10, 20, 25, 50, 75 & 100
- Biosafety
All polypropylene components meet the specifications for biological safety per the USP for Class VI-121° C plastics.
- FDA Listed Materials
All materials used in construction are listed for food and beverage applications in Title 21 of the U.S. Code of Federal Regulations.

END CAP CONFIGURATIONS



226



222



Flat



Closed



Spring



Fin

BUILDING A PART NUMBER

| MELT BLOWN | MEDIA | MICRON | DIAMETER | LENGTH | SERIES | CORE (OPTIONAL) | END CAP | GASKET/O-RING |
|------------|-------------------|---|---|--|--|---|--|--|
| B | E | 1 | S | 2 | X | | 2 | B |
| B | E = Polypropylene | 1 5 10 20 25 30 50 75 100 | S = 2.5" Standard M = 4.5"* C = Custom | 2 = 9.75 3 = 10 4 = 19.5 5 = 20 6 = 29.5 7 = 30 8 = 39 9 = 40 W = 50 C = Custom | S = Quad Pro X = Quad Deluxe A = Quad Elite R = Quad Ro | H = Polypropylene Core (Series A & R require a core) | 1 = DOE/no caps 2 = 222/Fin 3 = 222/Spring 4 = 222/Flat 5 = 226/Flat 6 = 226/Fin 7 = 226/Spring 8 = SOE/Spring 9 = Flat Gasket A = Custom | B = Buna V = Viton® T = Teflon® S = Silicone N = Neoprene D = EPDM P = Polyfoam (No Selection required for DOE) |

*4.5" Diameter, only DOE is available

King Lee Technologies

8949 Kenamar Drive, Bldg. 107 San Diego, CA. 92121
(858) 693-4062 USA | klt@kingleetech.com | www.kingleetech.com